



**TMEiC**  
*We drive industry*

# CORPORATE PROFILE



In 2023, commemorating its 20th anniversary and future growth opportunities, the company name has been changed to TMEIC Corporation (TMEIC) as of April 2024. Established in October 2003 through the integration of the industrial system, power electronics and rotating machinery businesses of Toshiba Corporation and Mitsubishi Electric Corporation, TMEIC has since expanded its businesses handed down from the two companies while also pursuing full-scale entry into the renewable energy field. Harnessing a broad range of technologies, products and services, TMEIC is proactively making inroads and achieving success in the global market.

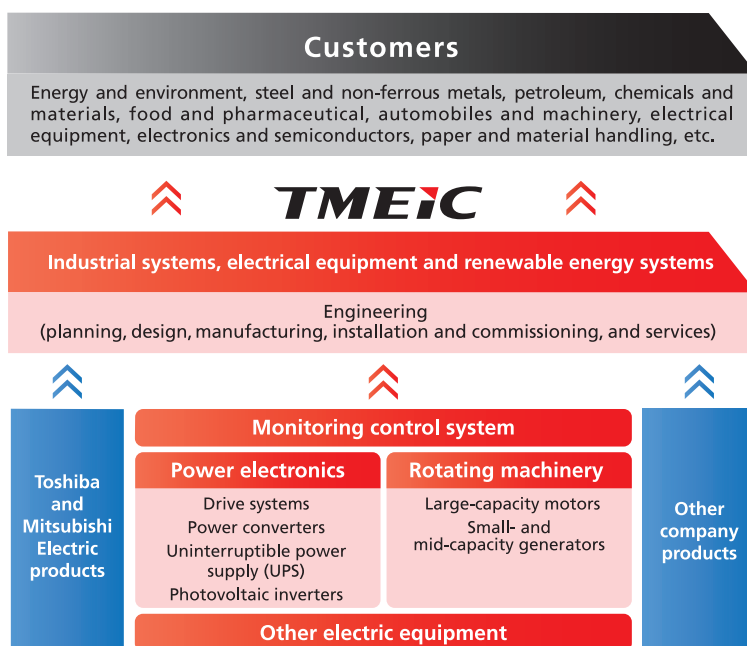
Since the adoption of the Sustainable Development Goals (SDGs) by the United Nations in 2015, initiatives to address social and global issues have been advancing globally. In this context, TMEIC is embracing new challenges toward the realization of a carbon-neutral society as a company supporting industrial and social infrastructures.

Guided by our corporate statement of “**We drive industry**”, TMEIC remains dedicated to fostering relationships of trust with customers and contributing to the achievement of a sustainable global society.

## Scope of Business and Business Structure

- Sales of industrial systems and electric equipment mainly for manufacturing plants, green energy systems including renewable energy systems and engineering, installation and servicing

- Development and manufacturing of monitoring control systems for manufacturing plants and renewable energy plants, as well as power electronics equipment and rotating machinery



## Products and Systems

- Industrial Systems and Products (automation systems, motor and drive systems and power distribution systems)
- Renewable Energy Systems (photovoltaic power generation / wind power generation / energy storage, etc.)
- Power Electronics Systems (drive systems, uninterruptible power supply [UPS], power converters, inverters)
- Rotating Machinery Systems (large-capacity motors and small- and medium-capacity generators)



Drive Systems



Premium Efficiency Series Motors



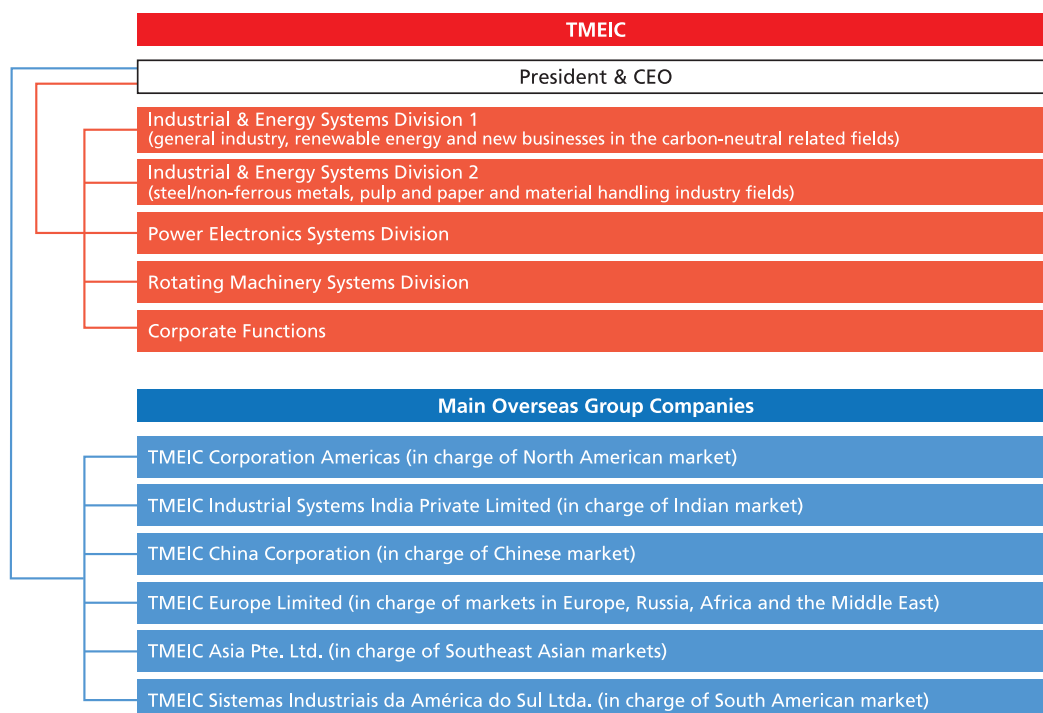
Inverters for Utility-scale Solar Power Generation Systems



Ultra-high-speed, Large-capacity Motors

## Organization

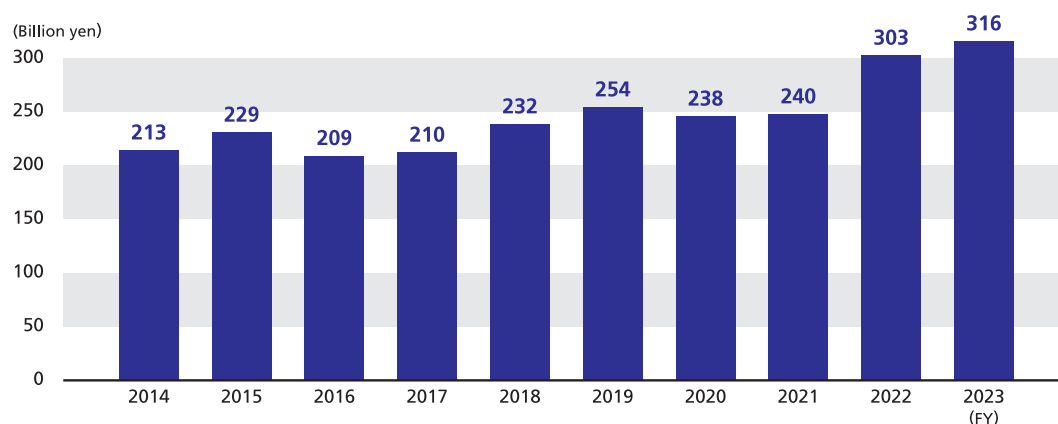
- Global expansion of business operations encompasses 18 Group companies and 11 manufacturing bases in 17 countries and regions worldwide



## Corporate Data

<b>Establishment</b>	October 1, 2003	<b>Sales bases in Japan</b>	Tokyo, Sapporo, Chiba, Toyama, Nagoya, Osaka, Okayama, Hiroshima, Shunan, Takamatsu, Fukuoka, Nagasaki
<b>Capital</b>	15 billion yen		
<b>Equity stake</b>	Toshiba 50%; Mitsubishi Electric 50%	<b>Manufacturing bases in Japan</b>	Tokyo (Fuchu), Yokohama (Keihin), Kobe, Ako, Nagasaki
<b>President &amp; CEO</b>	Akira Kawaguchi	<b>Group companies</b>	Japan: 1; Overseas: 16 (including 2 affiliate)
<b>Head office</b>	TOKYO SQUARE GARDEN, 3-1-1 Kyobashi, Chuo-ku, Tokyo 104-0031, Japan	<b>Number of employees</b>	4,861 (worldwide as of March 31, 2024)

## Global Net Sales



Network in Japan and Overseas

● Manufacturing bases ● Sales bases

